




UF | Facilities Services
UNIVERSITY of FLORIDA

Controversial Speakers: Keeping Campus Safe

A presentation for APPA Members

August 5, 2018



UF | Facilities Services
UNIVERSITY of FLORIDA

Presenter:
Gregg Clarke, MBA
Sr. Director of Facilities Operations
gclarke@ufl.edu
352-273-0575

Learning Outcomes

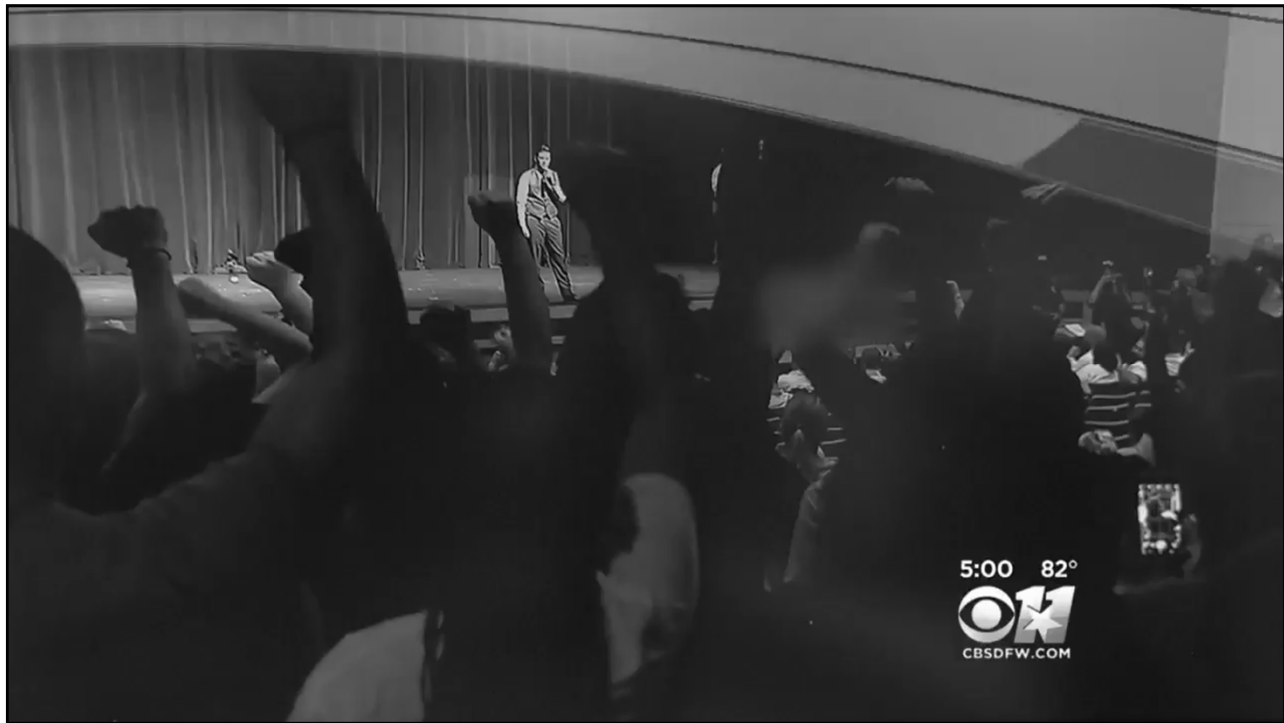
1. Learn the best practices in determining location of event
2. How to engage your team and others
3. Creating a planning template: preplanning, during and post event, along with other considerations
4. How to prepare staff, provide a safe environment, evaluate lessons learned, what went well and what can be improved

The logo of the University of Florida, featuring the letters "UF" in white on a dark gray background.

About the University of Florida

- Located in Gainesville, FL
- 55,000+ Students
 - Undergraduate 34,500+
- 2,000 Acres Main Campus
- 1,033 Buildings
- 23,000,000 sq. ft.
- 13,000,000 sq. ft. E&G space
- 825+ Diverse Facilities Staff

The logo of the University of Florida, featuring the letters "UF" in white on a dark gray background.



Planning Timeline

- August 11: NPI requests to rent space in Reitz Union
- August 12: Charlottesville tragedy
- August 14: Enhanced Planning begins for original 9/12 date
- August 16: UF President informs campus community the decision to deny NPI's request
- August 30: NPI retains legal counsel
- September 4-13: Hurricane Irma preparation and response (UF closed 9/8-13 and the cancellation of Northern Colorado Football Game)
- September 7: NPI requests new date of 10/19
- September 16: University of Tennessee Game with mutual aid from UTPD
- September 18: Resumed Planning for 10/19 Date
- September 24-28: UFPD visits UC Berkeley during Milo Yiannopoulos Free Speech Week
- October 16: Governor's Executive Order (Emergency Declaration)
- October 18: City of Gainesville Emergency Declaration Covering Prohibited Items Downtown

University Communications



UF

Student Involvement



UF

Student Involvement

"Good Deed Map"



UF

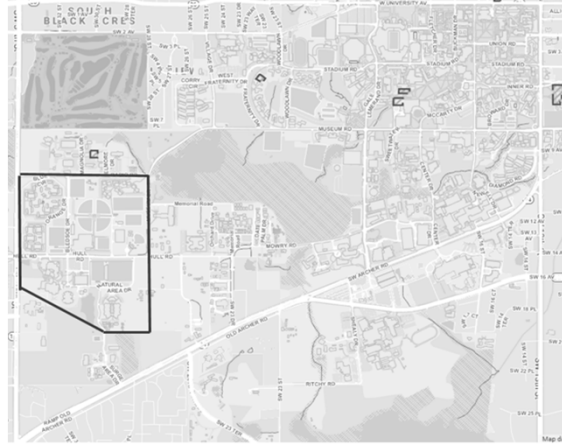
Campus activities hours before the event



UF

Campus Location

- Southwest Corner of Campus
- Called the Cultural Plaza
- Remote from Core Campus
- Easy to create boundaries



UF

Venue Location

- Curtis M. Phillips Center for the Performing Arts
- 1,700 Seat Auditorium
- Phillips Center selected due to location outside of academic core of campus



UF

Inside the Venue



UF

Inside the Venue

- Orchestra Pit opened to separate stage from patrons
- First section of rows reserved for NPI associates
- UF had live audio/video for monitoring but did not record to prevent an official public request of speech



UF

Inside the Venue



UF

Outside the venue



UF

Outside the venue



UF

Kathryn Varni Times

Ticket Distribution

- Original plan was the Phillip Center Box Office to issue tickets on a first come – first served basis
- Student and community efforts were to obtain but not use tickets
- NPI decided to handle tickets
- Distributed the day of event

UF

Community Involvement



HERE AT ALLIGATOR WE BELIEVE FREE SPEECH IS A CORNERSTONE OF OUR GREAT NATION. THAT SAID, SPEECH THAT CONDONE, LET ALONE PROMOTES RACIAL SUPREMACY HAS NO HOME IN AMERICA. AND IT SURE AS HELL DOESN'T HAVE A HOME HERE IN OUR BEAUTIFUL TOWN. WE'RE IN NO POSITION TO TELL YOU WHETHER OR NOT YOU SHOULD SHOW UP TO PROTEST OR COMPLETELY BOYCOTT RICHARD SPENCER'S UF APPEARANCE. BUT HERE'S WHAT WE CAN DO.

TICKETS FOR THE EVENT ARE FREE AND AVAILABLE TO THE GENERAL PUBLIC (WITH PROOF OF ID) BEGINNING SATURDAY AT NOON. SO STARTING THEN, AND ALL WEEKEND LONG, FOR EVERY TWO TICKETS YOU BRING IN, WE'LL TRADE YOU FOR A FREE ALLIGATOR BREWING DRAFT BEER. THOSE TICKETS AND RESERVED SPOTS WILL BE DISPOSED OF. LEAVING TWO MORE EMPTY SEATS IN THE PHILIPS CENTER. WE UNFORTUNATELY CAN'T STOP HIM FROM BRINGING HIS HATE TO GAINESVILLE, BUT WE CAN EMPTY THE ROOM SO HIS DISGUSTING MESSAGE GOES UNHEARD.

THIS IS OUR TOWN. THIS IS OUR COMMUNITY. AND THIS HOW WE'RE GOING TO SHUT HIM DOWN.



alligatorbrewing • Follow
Tall Paul's Brew House

alligatorbrewing Ticket become available this Saturday, October 14th and each person can get two with a valid ID. This is our town. This is our home. Let's do this Gainesville.

Load more comments

ashebaby10 ❤️❤️❤️ Thank you for having the balls to stand up for what's right!!! Cheers 🍻 #supportlocal #drinklocal #craftbeer

shoag84 This.

hopsandbottoms Saw this post and just had to show my love! 🍻

aquilaprincess Pittsburgh gal here! This is brilliant and I will most definitely stop by the next time I'm in Florida!

eyed77 Brilliant! Thanks!

evad77 @hardcheeseun read this is

❤️ 💬

1,526 likes

OCTOBER 12, 2017

Log in to like or comment. ...

UF

Propaganda Removal



UF

Securing Site

- Tree Pruning
- Covered Parking Attendant Booth
- Removed:
 - Parking Meters
 - Lights around fountain
 - Bike Racks
 - Garbage Cans
 - Landscape Stone



UF

Securing Protest Site



UF

Operations Template

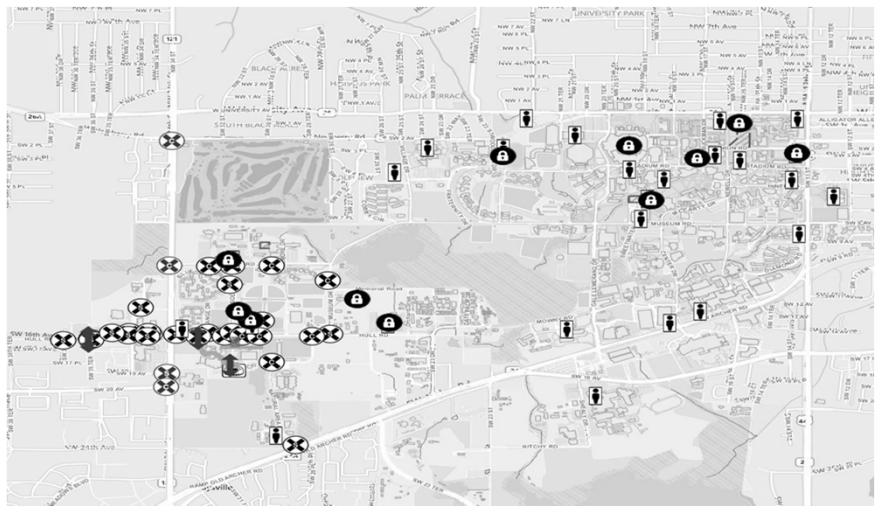
Event: 1019 Security Plan
Date & Time: 10/19/2017 2:34-4:30
Location: Cultural Plaza

Facilities Services Operations Plan

	Task	Department/Person Responsible	Date to be completed by	Comments	Complete
Pre-Event	Deliver chairs and set-up tables at SW Rec	Building Services/Racon	18-Oct		
	Add Trash Receptacles at Food Service Venues and staff SW Rec with two outdians	Building Services/Racon	19-Oct		
	Secure air intakes	C-Maintenance/Sellers	18-Oct		
	Shut down HVAC systems	C-Maintenance/Sellers	19-Oct		
	Remove lights around fountain	C-Maintenance/Whelan	17-Oct		
	Identify Stage Building lookouts - 25 individuals	FS Operations/Clarke	11-Oct		
	Visit site to ensure prep is satisfactory	FS Operations/Clarke	16-Oct		
	Create PC's for Barricades	Grounds/Pons	6-Oct		
	Barricade/Fencing Set Up	Grounds/Pons	16-Oct		
	Final Barricade setups, Cultural Plaza and Roads	Grounds/Pons	19-Oct		
	Set up barricades at the intersections	Grounds/Pons	16-Oct		
	Set up Orange construction fencing Ortho/Racing Lab	Grounds/Pons	16-Oct		
	Coordinate with Parking remove signs	Grounds/Pons	12-Oct		
	Coordinate dumpsters at checkpoint locations	Grounds/Pons			
	Set up vehicles at Ortho/Racing Lab	Grounds/Wolman	19-Oct		
	Trim trees and shrubbery	Grounds/Wolman	13-Oct		
	Remove benches, tables, trash cans, etc.	Grounds/Wolman	18-Oct		
	Remove Parking attendant booth?	Grounds/Wolman	16-Oct		
	Clean up rocks	Grounds/Wolman	13-Oct		
	Clear foot path behind Phillips Center	Grounds/Wolman	13-Oct		
	Finalize fencing/barricade plan	UFPD/Bankley	4-Oct		
	Shade Fountain	C-Maintenance/Rysak	19-Oct		
	Track Materials covered?	Unlabeled/Jackson	??		
	Two Person Staffing for Event	TBD	??		
During-Event	On-call teams to respond to any damages when safe	C-Maintenance/Masters			
	Monitor Cultural Plaza Temperature & Humidities	Central/Winnal			
	Pick up trash at food service locations	Building Services/Racon			
Post-Event	Remove Fencing and Barricades				
	Return benches, tables etc.				
	Turn on HVAC				
	Turn on Fountain				
	Lessons Learned Meeting				
	Make a list indicating possible areas of improvement				

UF

Staged Building Contacts



UF

Traffic Management

- Hard and Soft Closures
- Campus Road Closures
- City Road Closures
- Gainesville Regional Transit Routes

The logo consists of the letters "UF" in white, bold, sans-serif font, centered within a dark gray square. This square is positioned above a horizontal band of gray halftone dots that spans the width of the slide.

Road Closures and Checkpoints

The logo consists of the letters "UF" in white, bold, sans-serif font, centered within a dark gray square. This square is positioned above a horizontal band of gray halftone dots that spans the width of the slide.

Road Closures

- Vehicle barricades and checkpoints
- Only public safety vehicles allowed within event area
- Access to Housing
- Access to ADA parking



UF

Kelly Bazzle WFTS

Checkpoints

- Hard closures at checkpoints
- Two main locations for entry
- Prohibited Items



UF

Prohibited Items List

- Weapons, firearms or simulated firearms, tasers, knives, sharp objects
- Lighters, matches, torches or open flame
- Any athletic equipment or other items which could be used as a weapon
- Masks of any kind, goggles, bandanas/scarfs, neck gaiters
- Flag Poles, bats, clubs, sticks (including sticks on signs)
- Aerosol/pressurized cans, mace
- Chains, padlocks, bicycle locks
- Shields
- Fireworks
- Backpacks, bags, purses, clutches
- Signs made of anything other than cloth, paper, foam core, cardboard
- Cans, metal or glass containers, premixed beverages or alcoholic beverages
- No water bottles of any kind
- Pop-up tents, canopies or hammocks
- Wagons or pull carts
- Coolers
- Drones or other unmanned aircraft systems
- Pets (excluding ADA service animals)
- Grills, propane tanks
- Bicycles, scooters, skateboards
- Tobacco products of any kind
- Umbrellas
- Laser pointers
- Water balloons
- Megaphones or other amplified sound devices
- Any other items that campus police determine pose a risk to safety or a disruption of classes or vehicular or pedestrian traffic

UF

Prohibited Items Postings



UF

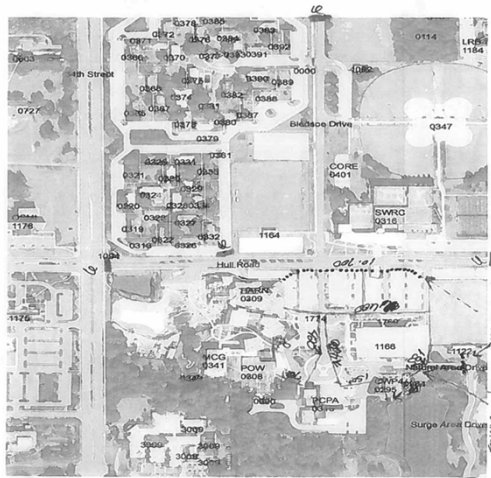
Barricades

- Bicycle and Water Wall Barricades
- “Snake” barricades to protect and guide ticket holders to venue
- Speaker and associates taken in and out separate entrance



UF

First Proposed Barricade Layout



UF

Second Proposed Barricade Layout



UF

Final Barricade Layout

UF

Event Pictures



UF

Chuck Fager

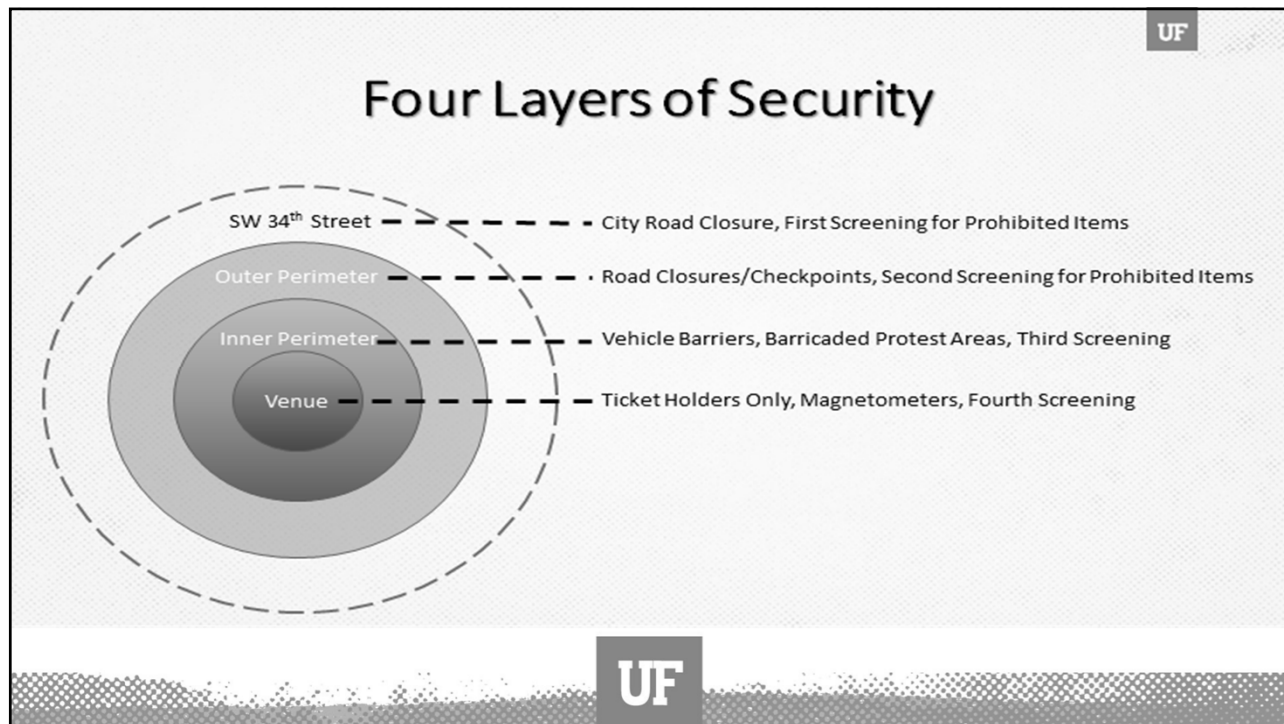
Law Enforcement

- 45+ Agencies
- Federal, State, and Local
- Medical Groups



Joe Raedle/Getty Images

UF



UFPD Berkeley Visit

- Groups intended to disrupt planned events to include using violent tactics
- Sophisticated planning, communication, and tactics among groups
- Clothing and symbols used by the groups
- A large and nimble law enforcement response is needed to effectively mitigate the potential for disruption and violence



UF

Florida Highway Patrol

- On campus entire week
- Provided numerous Field Force Teams in protest area
- Actively involved in planning process from the beginning
- Buses were staged in event the teams needed to move to other areas on campus or in the city

REUTERS/Shannon Stapleton

UF

University Command Planning

UF

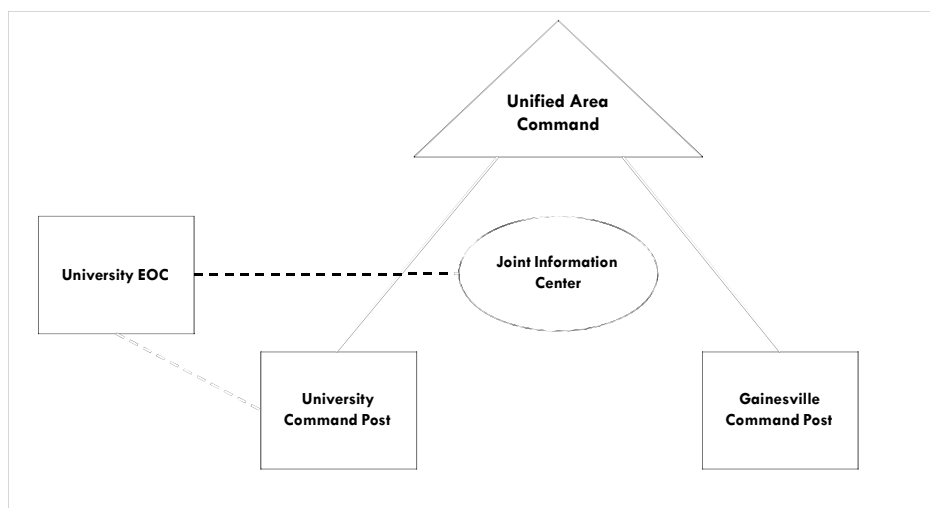
University Command Planning

- Development of a consolidated, signed Incident Action Plan:
 - Alachua County Sherriff
 - Gainesville Police Chief
 - University Police Chief
- Facilitation of University planning meetings leading up to incident
- Consolidated objectives
- UCF Emergency Management Mutual Aid to support Planning Section Chief position



UF

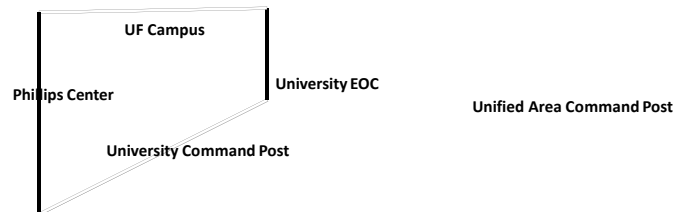
Communication Flow



UF

Command Posts

Gainesville Command Post



UF

Unified Area Command

- Area Commanders
 - Alachua County Sheriff
 - GPD Chief
 - UFPD Chief
- Senior state agency administrators
- Intelligence Unit
- Authorized rules of engagement for all agencies
- Located at Alachua County EOC

UF

Gainesville Command Post

- Located at Gainesville Public Works
- City command of resources assigned, including staging at UF Racing Lab and SW 34th Street closure

The logo consists of the letters "UF" in a white, bold, sans-serif font, centered within a dark gray square. This square is positioned above a horizontal band of gray halftone dots that spans the width of the slide.

University Command Post

- Located inside Entomology/Nematology Building
- Command and control of resources assigned under University Command
- Inside outer perimeter but hidden from protestors

The logo consists of the letters "UF" in a white, bold, sans-serif font, centered within a dark gray square. This square is positioned above a horizontal band of gray halftone dots that spans the width of the slide.

Situational Awareness

- Consolidation of numerous video feeds:
 - City traffic cameras
 - University cameras
 - FDLE cameras
 - UAVs
- Four dedicated positions in University Command Post
- Use of Zoom platform to link Command Posts and University EOC

The logo consists of the letters "UF" in a white, bold, sans-serif font, centered within a dark gray square. This square is positioned above a horizontal band with a halftone dot pattern.

University EOC

- Support of the University Command Post
- Coordination and consequence issues
- UCF Emergency Management mutual aid support
- Emergency Operations Team (EOT) tasking pre-incident to coordinate University support of Public Safety needs

The logo consists of the letters "UF" in a white, bold, sans-serif font, centered within a dark gray square. This square is positioned above a horizontal band with a halftone dot pattern.

Joint Information Center

- Located at Softball Stadium
- Staffing by agency PIOs
- Credentialing of media
- Social media coordination of agency accounts
- Information releases prior to incident
- Success of FAQs and incident information at freespeech.ufl.edu

The logo consists of the letters "UF" in a white, bold, sans-serif font, centered within a dark gray square.

Venue Division

- Bomb screening of venue prior to opening
- Rented Magnetometers
- Screening of ticket holders and NPI group
- Difficulty in obtaining security company to staff screening
- Patrons restricted to 1st Floor
- Cameras and law enforcement teams in balcony areas

The logo consists of the letters "UF" in a white, bold, sans-serif font, centered within a dark gray square.

Medical Branch

- Lead by Alachua County Fire Rescue
- Rescue Units staged inside the outer perimeter
- Road leading out controlled for transports
- Mobile Emergency Response Vehicles for crowd access
- Medical Reserve Corps treatment area

The logo consists of the letters "UF" in a white, bold, sans-serif font, centered within a dark gray square. This square is positioned above a horizontal band of gray halftone dots that spans the width of the slide.

Medical Branch

- UAS live video over protest areas
- Florida law prohibits law enforcement agencies to operate drones

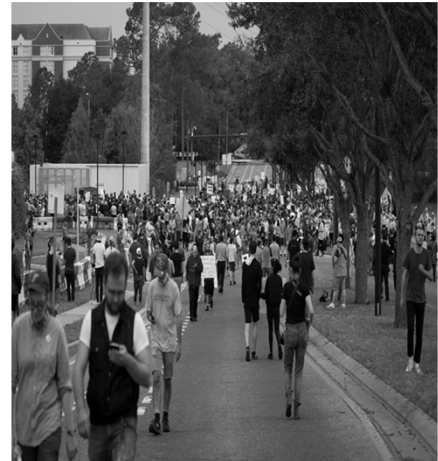
The logo consists of the letters "UF" in a white, bold, sans-serif font, centered within a dark gray square. This square is positioned above a horizontal band of gray halftone dots that spans the width of the slide.

Information Technology Unit

- Wireless mesh network
- Transition of existing wireless in incident area to public safety only network
- Temporary cameras at key locations on campus, including inside venue
- Technology infrastructure for University Command Post and Joint Information Command

The logo of the University of Florida, featuring the letters "UF" in a white serif font on a dark gray rectangular background.

Event Pictures



Michael Stone/WUFT News

The logo of the University of Florida, featuring the letters "UF" in a white serif font on a dark gray rectangular background.

Lessons Learned

- Have one person as the departmental contact
- Start planning and collaborating early with everyone involved
- Create an action plan early with your internal team and assign tasks appropriately
- Ensure a consistent message is being communicated across department
- Review plans that other departments create affecting your department plan
- Single point ordering process that will be reimbursed or directly purchased for supporting agencies
- Solicit other Universities/Colleges for input
- Plan, Plan, and review the Plan again


 UF

Outcomes

What Went Well

- Communication – University Level
- Collaboration
- Planning
- Being Prepared
- Forward Thinking – Anticipating
- Empathy

Improvements

- Communication – Across Departments
- Responsibility delineation
- Reduce last minute requests
- After Event Review – Campus


 UF

Resources

UF Website - <https://freespeech.ufl.edu/resources/for-universities-that-host-controversial-speakers/>

Charlottesville document contains several recommendations for someone facing a similar event - [Independent Review of the 2017 Protest Events in Charlottesville, Virginia](#)

Document regarding campus protests and the role of emergency management - [National Center for Campus Public Safety – Campus Protests and Demonstrations: The Role of Emergency Management](#)

The logo consists of the letters "UF" in a white, bold, sans-serif font, centered within a dark gray square. This square is positioned above a horizontal band of gray halftone dots that spans the width of the slide.

Thank you for attending!!!

Questions???

The logo consists of the letters "UF" in a white, bold, sans-serif font, centered within a dark gray square. This square is positioned above a horizontal band of gray halftone dots that spans the width of the slide.