

# APPA Credentialing Board Recognizes Two Outgoing Board Members



By John P. Morris P.E., CFM, CEFP, APPA Fellow



Tom Becker



Dave Button

**A**s chair of the Credentialing Board I would like to recognize two of our outgoing Credentialing Board of Director (BOD) members: Tom Becker, P.E., EFP, CEFP, (Associate V.P. of Operations at Thomas Jefferson University), and Dave Button, MSc, P.Eng, PMP, CEFP (Vice-President of Administration at the University of Regina). We are now in our 12th year since inception, and Tom and Dave have been on the BOD for half of those years and have been instrumental in the program's advancement. Tom served as the chair of the BOD from 2014 through 2016 and Vice-Chair for 2017. Dave served as the Secretary/Treasurer for all six years of his term on the Credentialing Board.

During the tenure of these two individuals the BOD made significant progress, and I would like to expand on some of these accomplishments. Under Tom's leadership the BOD promoted the following strategic plan.

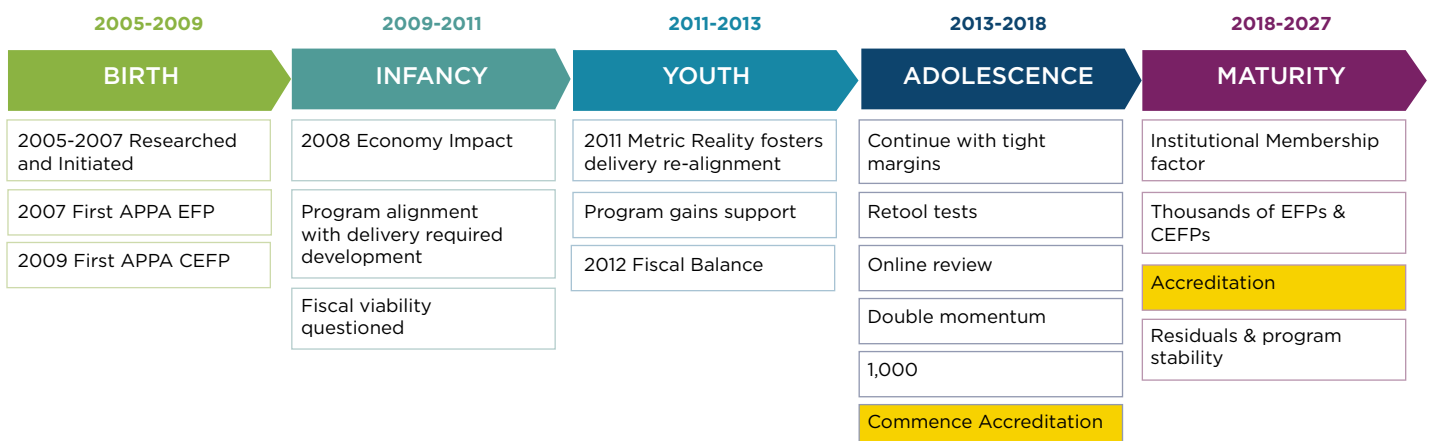
### CREDENTIALING BOARD STRATEGIC PLAN

- Maintain Body of Knowledge (BOK) Alignment
- Program Design will Support Local Delivery

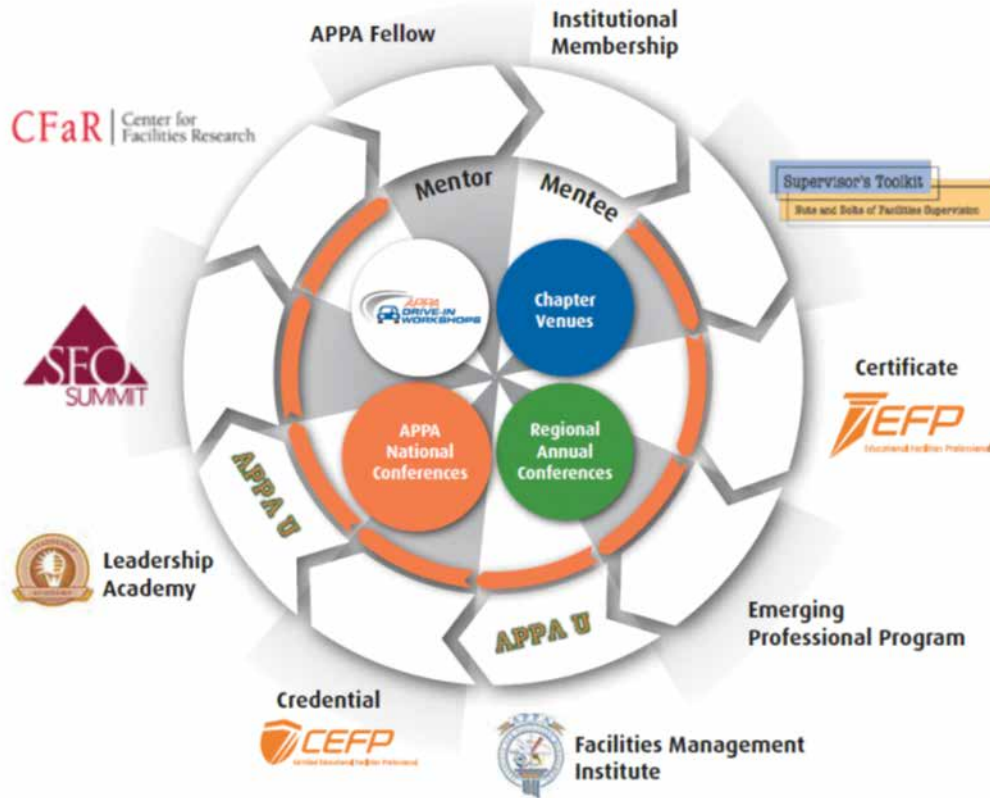
- Create and Deliver Quality Preparatory Programming
- Create a Comprehensive Marketing and Communications Plan
- Refine and Enhance Support Systems
- Integrate Credentialing and APPA Programming
- Establish and Maintain Program Integrity
- Establish Benchmarks, Metrics, and Reporting Mechanisms to Guide Resource Management

During their tenure the credentialing program advanced from its "infancy" stage to its "adolescence" stage as shown in the Credentialing Timeline chart below. One of the most exciting accomplishments was successfully achieving the goal of 1,000 certified and credentialed individuals by 2018. This was no small feat, since there were only about 220 certified and credentialed individuals when they first took office.

The Credentialing Board feels accreditation is critical, and Tom and Dave were instrumental in leading this initiative. After investigation and in alignment with other APPA standards we have



# APPA Professional Development Continuum



designated our accreditation target to be ANSI accredited. ANSI follows ISO 17024 standards, which are widely accepted internationally. Again, quite an accomplishment knowing that many other professional organizations took several decades to achieve this designation.

Per the strategic plan, alignment with the APPA Body of Knowledge (BOK) and other APPA programs is essential. As shown in the chart above, credentialing is an important part of the Professional Development Continuum and adds competency assurance.

## REGIONAL SUPPORT

The Credentialing Board has received incredibly strong commitments from the various APPA regions as certificates and credentialing become the normal expectations of our profession. The goal of both the APPA Board and the Credentialing Board is to give our membership every opportunity to attain these validations. As part of the regional commitments, the APPA regions have offered full or partial subsidies to their members who seek certification and creden-

tials, and over 530 members have taken advantage of this opportunity.

## STRATEGIC ALLIANCES

The Credentialing Board also recognizes that the EFP and CEFP programs can benefit some of APPA's strategic partners such as ACUHO-I, NACUBO, AIA, NSPE, SAME (Military Engineers), GSA, and even the United Nations/International Schools. The Board is actively working with these organizations to have them accept the APPA credentials as a standard for their members or to be a part of their educational requirements. For example, the Board was approved by the AIA to become a professional provider of course content for their members.

## CUSTOMIZED INTERACTIVE LEARNING (CIL)

Per the strategic plan, the Credentialing Board, with incredible help from the APPA staff, has completed revisions to the online training and preparatory platform, aka customized interactive learning (CIL). This self-paced online course covers the fundamentals of the educational facilities profession,

## NEED MORE INFORMATION?

If you would like to learn more about the APPA Credentialing program, please visit our website at <http://credentialing.appa.org/> or contact Kelly Ostergrant [kelly@appa.org](mailto:kelly@appa.org) or Christina Hills [christina@appa.org](mailto:christina@appa.org).


using state-of-the-art learning tools to help applicants master the full CEFP Credentialing Curriculum, which includes:

- Distinct EFP and CEFP study guides
- All four core areas of the APPA Body of Knowledge
- Flashcards
- Practice exams
- Practice quizzes
- Sample Q&A Questions and Knowledge Checks
- An active engagement via a forum chat area
- Live interactive webinars

The CIL platform is a live and private web event with peers and qualified CEFP facilitators. Upon enrolling in the CEFP or EFP Curriculum, participants are assigned to a CIL Group and facilitator, and are pre-registered for four separate live customized learning sessions held monthly over a period of 90 days. We have also started offering 8-week courses—two a week per chapter/domain—which include four live webinars, in addition to all of the CIL learning tools and 30 days to test.

The CIL program has proven itself to be beneficial to the nearly 600 participants who are actively enrolled or already completed the program.

## ACCOLADES

I would like to extend my thanks and appreciation to the APPA staff, the Credentialing Board of Directors, the APPA SMEs, our CIL facilitators, and our consultants for their exceptional efforts to make this program a success. I would also like to give special recognition to Tom Becker and Dave Button for their outstanding service to the Credentialing Board. We could not have been as successful in our efforts without their dedicated contributions. I also welcome our newest BOD member: Emmet Boyle. 

John Morris is vice president for facilities planning, management, and operations at the College of Charleston, SC. He can be reached now at [john.morris@colorado.edu](mailto:john.morris@colorado.edu).



CELEBRATING 50 YEARS

# GALE

**ENGINEERS & DESIGN  
PROFESSIONALS**

*Specializing in Educational Facilities  
since 1964*

Gale Associates, Inc.  
800-659-4753  
[jfl@gainc.com](mailto:jfl@gainc.com)  
[www.galeassociates.com](http://www.galeassociates.com)

### **Building Enclosure/Structural Services:**

- Roof and building enclosure management programs
- Roof, wall, window/glazing, waterproofing, and structural evaluations and designs
- Forensic evaluations
- Construction phase assistance
- Enclosure design assistance and peer review for new construction, and historic, LEED-certified, and green roof facilities

### **Athletic and Recreation Facilities Design Services:**

- Comprehensive athletic campus evaluation and master planning
- Athletic facilities planning, permitting, and programming
- High-efficiency lighting, minimizing off-site impacts
- New track facilities, track renovations, and conversions
- All types of synthetic and natural turf fields

BOSTON    BALTIMORE    ORLANDO    BEDFORD, NH    WASHINGTON, DC    HARTFORD