



# Inside APPA

LEADERSHIP IN EDUCATIONAL FACILITIES

**June 17, 2015**  
Vol. 15, No. 12

## APPA Events

**Add Your Own Events!**  
[APPA's Online Calendar of Events](#)  
Focus on Educational Facilities

**Jun 22, 2015**  
[APPA Facilities Drive-In Workshop \(sponsored by Veritiv and Armstrong\)](#)  
Philadelphia, PA (University of Pennsylvania)

**Jun 23, 2015**  
[APPA Facilities Drive-In Workshop \(sponsored by Veritiv and Armstrong\)](#)  
Riverdale, NY (Manhattan College)

**Jun 26, 2015**  
[APPA Informatics Work Group Conveners Meeting](#)  
Webcast

**Aug 3, 2015**  
[Senior Facilities Officer \(SFO\) Summit](#)  
Chicago, IL

**Aug 3, 2015**  
[Emerging Professionals \(EP\) Summit](#)  
Chicago, IL

**Aug 4-6, 2015**  
[APPA 2015 Annual Conference and](#)

Welcome to *Inside APPA*, your biweekly electronic news source for regional and international APPA events, programs, publications, and industry information.

Questions? Comments? News?  
Contact [Steve Glazner](#), Editor  
Visit APPA's [Virtual Membership Directory](#)  
Read [Inside APPA archives](#)

CONNECT WITH US:



## CONTENTS

[Headline News](#)  
[APPA News](#)  
[Professional Development and Credentialing](#)  
[APPA Information & Research](#)  
[Industry News](#)

[Sponsored Advertisement by AMERLUX]

We are going to change the way you view light.

Find out how at [Amerlux.com](#)

amerlux  
Passion. Power. Performance.

[Sponsored Advertisement by Veritiv]

**Exposition**  
Chicago, IL

Sep 13-17, 2015  
**APPA U - Institute for  
Facilities Management  
and Leadership  
Academy**  
Scottsdale, AZ

Oct 19-22, 2015  
**ACUHO-I/APPA  
Housing Facilities  
Conference**  
St. Petersburg Beach,  
FL

Sep 11-15, 2016  
**APPA U - Institute for  
Facilities Management  
and Leadership  
Academy**  
Orlando, FL

### APPA Region & Chapter Events

Jun 18-19, 2015  
**MD/DC APPA Annual  
Summer Educational  
Program**  
Solomons Island, MD

Jul 8-10, 2015  
**MiAPPA Summer  
Conference 2015**  
Petoskey, MI (North  
Central Michigan  
College)

Jul 20-24, 2015  
**APPA's Supervisor's  
Toolkit (spons. by  
SRAPPA)**  
Martin, TN (Univ  
Tennessee at Martin)

Jul 27-30, 2015  
**APPA's Supervisor's  
Toolkit (spons. by  
CAPPA)**  
Brookings, SD (South  
Dakota State Univ)

Sep 8-11, 2015  
**RMA 2015 Annual  
Conference**  
Big Sky, MT

Sep 19-23, 2015



### HEADLINE NEWS



### Don't Miss These Upcoming APPA Facilities Drive-In Programs

*Learn how your institution or organization can organize an APPA Drive-In Workshop in your area.*

Sponsored by APPA Business Partners, APPA Drive-In Workshops cover some of the most innovative solutions to your facilities management challenges. APPA staff members work closely with the Partner and the host institution to ensure program content is appropriately relevant to the needs of the APPA member institution hosting the event, and to other institutions within a 2-3 hour driving distance. Speakers may include subject matter experts from the business partner community and/or educational facilities professionals from area institutions. All Workshop speaker presentations are "ad-free." Upcoming programs:

June 22, 2015  
[APPA Facilities Drive-In Workshop \(spons. by Veritiv and Armstrong\)](#)  
Philadelphia, PA (University of Pennsylvania)

June 23, 2015  
[APPA Facilities Drive-In Workshop \(spons. by Veritiv and Armstrong\)](#)  
Riverdale, NY (Manhattan College)

Attendees will receive the following education credits: 0.4 CEUs/4 PDH units/4 LUs. Learn how your institution or organization can organize an APPA Drive-In Workshop in your area by clicking [here](#), or contact Corey Newman at [corey@appa.org](mailto:corey@appa.org).

### APPA NEWS



Standards and Codes Council

**MAPPA 2015 Annual Conference**

Milwaukee, WI

Sep 20-23, 2015

**APPA's Supervisor's Toolkit (spons. by MAPPA)**

Milwaukee, WI  
(MAPPA 2015)

Sep 21-24, 2015

**APPA's Supervisor's Toolkit (spons. by PCAPPA)**

San Mateo, CA  
(College of San Mateo)

Sep 21-24, 2015

**APPA's Supervisor's Toolkit (spons. by MAPPA)**

San Mateo, CA  
(College of San Mateo)

Sep 21-25, 2015

**APPA's Supervisor's Toolkit (spons. by SRAPPA)**

Starkville, MS  
(Mississippi State Univ)

Oct 4-7, 2015

**ERAPPA 2015 Annual Conference**

Providence, RI

Oct 9-15, 2015

**PCAPPA 2015 Annual Conference**

Portland, OR

Oct 10-13, 2015

**APPA's Supervisor's Toolkit (spons. by PCAPPA)**

Portland, OR

Oct 10-13, 2015

**SRAPPA 2015 Annual Conference**

Baton Rouge, LA

Oct 11-14, 2015

**CAPPA 2015 Annual Conference**

Manhattan, KS

Nov 6-7, 2015

**AAPPA Fall Training Conference**

**Attend the APPA Standards and Codes Council Webinar June 26**

The [APPA Standards and Codes Council \(ASCC\)](#) invites all APPA members to participate in a Convener's Meeting of the ASCC Informatics Work Group, to take place via web software on Friday, **June 26 from 1:00 pm – 2:30 pm Eastern**. There is no cost to attend. The purpose of the convener's meeting is to introduce interested stakeholders to the Work Group's activities, and to also encourage comments and suggestions on the proposed work program. Among other items in its scope of work, the ASCC Informatics Work Group will establish terms and definitions for use in creating a common data set, for use by educational facilities organizations, to support the collection of critical facilities/automated building data and the decision-making process. Such data would include that which supports the management of building climate, security, operations, maintenance, and other areas as defined by the group. Persons responsible for database management, collection, and analysis within educational facilities organizations are encouraged to participate. [Register today!](#) [For more information, contact Sam Waymire at sam@appa.org.](#)



**The August Conference is Fast Approaching!  
Register today for APPA 2015**

On August 4-6 more than 500 facilities officers, directors, and managers throughout the United States, Canada, Mexico, and the rest of the world convene in Chicago for [APPA 2015](#). The event is our hub to identify and discuss the most current and pressing challenges our facilities face— and that we face as professionals. Join us to exchange ideas and discover global best practices from more than 100 presenters, including the profession's most recognized and talented leaders. [Learn more](#) about APPA 2015.

**If you're a senior facilities officer (SFO) or emerging professional (EP), mark your calendar for the SFO Summit and the the EP Summit, which will both take place on August 3. Details available soon.**

**Visit the Expanded APPA Land's End Store**

Show the world you are part of the educational facilities world's top professional organizations. At the APPA Land's End store, you can purchase high-quality apparel and other gear of your choice and have it personalized with the APPA logo. All items available at the Land's End store are backed 100 percent by the Land's End's product guarantee. Fulfill your APPA gear needs and those of your staff at the [APPA Land's End store](#). If you have any questions, please contact [anita@appa.org](mailto:anita@appa.org).



*Charting a course  
to sustainability.*  
LANDS'END



Welcome to the  
APPA Store!  
This is the place to shop for all APPA apparel and gear.  
You'll find this site easy to use and convenient.

BROUGHT TO YOU BY  
**LANDS' END**  
SIGNING OFF OFFITERS

[Order Status](#) | [Team Sizing](#) | [Privacy Policy](#) | [E-mail Us](#)

©2015 Lands' End Inc.

**Other Events**

**Jul 9, 2015**  
[18th Annual Congressional Renewable Energy and Energy Efficiency EXPO and Policy Forum](#)  
Washington, DC

**Jul 28-30, 2015**  
[Solar 2015 Conference](#)  
State College, PA

**July 31, 2015**  
[Applications Due for the Professional Grounds Management Society's Green Star Awards](#)

**Sep 20-23, 2015**  
[Big Ten & Friends Mechanical & Energy Conference](#)  
College Park, MD

**Oct 21-24, 2015**  
[PGMS 2015 School of Grounds Management & GIE Expo](#)  
Louisville, KY

**Oct 25-28, 2015**  
[AASHE 2015 Conference & Expo](#)  
Minneapolis, MN

**PROFESSIONAL DEVELOPMENT AND CREDENTIALING**

**Don't Miss the Upcoming Supervisor's Toolkit Offerings Hosted by SRAPPA, CAPP, MAPPA, and PCAPPA**

APPA's Supervisor's Toolkit training is a structured, open-ended, and pragmatic approach to developing supervisors especially designed for the educational facilities professional. It is not so much a training program as it is a development process designed to help supervisors realize both personal and professional growth. The program is designed for a full week of training. It will help you respond to the demands of intense competition, advancing technology, and changing values —the forces that are transforming your role as a supervisor. Choose the most convenient offering and register today!

**Supervisor's Toolkit**

**Nuts and Bolts of Facilities Supervision**

Region	Location and Details	Dates	Register by
SRAPPA	<a href="#">University of Tennessee at Martin</a>	July 20-24	<a href="#">July 13</a>
CAPPA	South Dakota State University	July 27-30	Coming soon!
MAPPA	MAPPA 2015 - Milwaukee, WI	Sep 20-23	Coming soon!
PCAPPA	College of San Mateo	Sep 21-24	Coming soon!
SRAPPA	<a href="#">Mississippi State University</a>	Sep 21-25	<a href="#">Sep 14</a>
PCAPPA	PCAPPA 2015 - Portland, OR	Oct 10-13	Coming soon!



**Now You Can Prep Online for the Exam to Obtain Your APPA Professional Credentialing Certification!**

*A convenient way to fast-track your career success.*

APPA's Credentialing Program Prep Course is now being offered online. This new option fully takes the place of the on-site, face-to-face prep course. It can be used to prepare you for both the [Educational Facilities Professional \(EFP\)](#)

and the [Certified Educational Facilities Professional \(CEFP\)](#) credentials. Use the online prep course as your optimal prep/study model. Benefits include:

- Covers all four core areas of the APPA Body of Knowledge (BOK)
- Self-paced (can be viewed at home or work)
- No travel costs required
- Modular (can be viewed in any preferred order)
- Practice exams (full-length, timed practice exams for EFP and CEFP)
- Knowledge checks (these are reading comprehension tools that will get you thinking in a deeper way about concepts discussed in the course to better utilize them)
- Interactive exercises (sample Q&As, true/false, and matching exercises will provide “gut” checks throughout the course)
- And more.

Learn more about this exciting new option [here](#), and register to prep for your EFP or CEFP credential today! Questions? Contact Christina Hills at [christina@appa.org](mailto:christina@appa.org) or call 703-542-3844.

## APPA INFORMATION & RESEARCH

### APPA Report Explores Maximizing the Campus Built Environment

The most recent report in the APPA Thought Leaders Series focuses on the issues and challenges related to leveraging campus facility assets to achieve desired institutional outcomes. [Leveraging Facilities for Institutional Success](#) identifies the key characteristics of successful campuses, then looks at what institutions are actually achieving – the disagreeable reality of unsustainable funding models, unsuccessful students, and poorly utilized resources. As a result, the 2014 Thought Leaders report lists the following strategies to help maximize the built environment's contribution to colleges' and universities' mission and vision:



- Understand how facilities affect student success and employ best practices for student recruitment and retention.
- Use total cost of ownership (TCO) as a guiding principle for all facilities decisions.
- Make better use of campus space.
- And more.

Download and read the entire 2014 Thought Leaders report [here](#). You also may request the free report from the APPA [bookstore](#).

### Facilities Performance Indicators Report Now Available

The results of the 2013-2014 Facilities Performance Indicators (FPI) survey are available online. Participating schools may access the report at no cost. Others may purchase access; pricing data is available [here](#) by clicking on the FPI Report tab. If your institution did not take part in this year's FPI survey, you missed out on a major opportunity to better align its facilities portfolio with your institution's strategic direction and academic focus, make the business case for your facilities needs, and better address the capital asset realities you face. Data

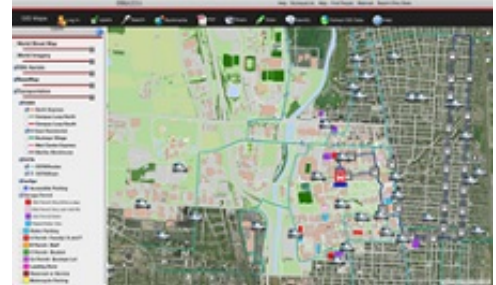


gathering for the 2014-2015 cycle begins in July. Don't miss out on the benefits the FPI survey and report deliver. Access the Facilities Performance Indicators (FPI) [here](#).

## INDUSTRY NEWS

### Ohio State Goes Live with Real-time GIS Maps Website

The Ohio State University has gone live with its GIS Maps 1.0, a live Geographic Information System (GIS) map of the historic Columbus campus. The public website at [gismaps.osu.edu](http://gismaps.osu.edu), offers up-to-date information on the location of campus buses and routes, car2go vehicles, and currently available parking spaces, as well as energy consumption by building. Partnered by Woolpert, the site also highlights static student amenities, such as building locations, blue emergency phones, bike racks, landscape data, handicapped parking, and city bus routes. For OSU employees with a user ID, the site provides further GIS information: utility line locations, road pavement conditions, building assessment data, and building floor plans with associated space data. The Ohio State University has more than 1,300 buildings across its six campuses, and had a total enrollment of nearly 65,000 students in the fall of 2014. [Learn more](#).



### NIST Releases Draft Community Resilience Planning Guide for Public Review

The U.S. Commerce Department's National Institute of Standards and Technology (NIST) has issued a draft guide to help communities plan for and act to keep windstorms, floods, earthquakes, sea-level rise, industrial mishaps, and other hazards from inflicting disastrous consequences. NIST is requesting public feedback on the draft Community Resilience Planning Guide for Buildings and Infrastructure, which was unveiled during an April workshop at Texas Southern University in Houston. The guide lays out a six-step process that starts with the formation of a resilience team drawn from the community and culminates with the development and implementation of resilience strategies that are updated regularly. The official first version of the guide will be released this fall and updated periodically as new building standards and research results become available and as communities gain experience using the guide and recommend improvements. **All comments on the new guide are due to NIST by June 26.** Learn more at this NIST site, which contains a range of resiliency-related links: [http://www.nist.gov/el/building\\_materials/resilience/draft-community-resilience-guide.cfm](http://www.nist.gov/el/building_materials/resilience/draft-community-resilience-guide.cfm).



**National Fire Protection Association**

The authority on fire, electrical, and building safety

### U.S. School Safety, Codes and Security Workshop Report Now Available

*Collectively, APPA and NFPA will be working on ways to integrate the contents of the report into the applicable codes, standards, guidelines, policies, and*

*procedures.*

The most recent School Safety, Codes and Security Workshop report from the [National Fire Protection Association](#) is now available. The workshop attempted to identify and understand the sometimes competing objectives of fire and security safety. United with the expectations of law enforcement and fire department personnel, who often arrive at the height of or just after an event has ended, the workshop took stock of the current building, life safety, and fire codes provisions for egress; how those in the security industry view school safety; how school systems deal with their own internal procedures; and what protocols are or should be in place for the first responder community. Facts and figures from the workshop:

- Half of the fires in buildings that house preschool through grade 12 are intentionally set.
- About three-quarters (71%) of the structure fires occurring in educational properties involve schools providing pre-school through high-school education.
- An estimated 4,060 structure fires involving pre-school through grade 12 buildings were reported per year in 2007-2011.

[Read the final report](#) from this workshop (PDF, 5 MB).

### **RCMA Accepting Abstracts for 2016 International Roof Coatings Conference**

The Roof Coatings Manufacturers Association (RCMA) is now accepting abstracts for its third biennial International Roof Coatings Conference (IRCC) program. The deadline for submission of abstracts is **October 1, 2015**. The 2016 IRCC takes place July 18-21 in Philadelphia and will feature networking opportunities, educational sessions, and other industry updates geared toward professionals involved in the roofing and building sciences industry. Roofing industry professionals, experts in building envelope technologies and green building fields, as well as researchers and those in the architectural community are welcome to submit their abstracts for consideration. Possible presentation topics include global market developments, sustainability and green building practices, energy cost savings evaluations, roof coatings formulation advancements, roof systems analysis, and accelerated aging. Visit [www.roofcoatings.org](http://www.roofcoatings.org).



You are receiving this e-mail as a member of APPA, or because you requested it. Send any comments or questions to the [editor](#), Steve Glazner. Contact [Gerry Van Treeck](#) for advertising options. To ensure delivery of APPA's communications, please add [steve@appa.org](mailto:steve@appa.org) to your email address book or Safe Sender List. If you are still having problems receiving our communications, see our [whitelisting page](#) for more details.

APPA promotes leadership in educational facilities through a variety of forums that address trends, issues, and best practices in educational facilities management. We are the association of choice for more than 5,200 educational facilities management professionals throughout the United States and abroad.

---

**APPA: Leadership in Educational Facilities**  
1643 Prince Street • Alexandria, VA 22314  
Ph: 703.684.1446 • Fax: 703.549.2772 • Web: [www.appa.org](http://www.appa.org)

Click [here](#) to unsubscribe